

About Ukiha City

Ukiha City is located in the south-eastern part of Fukuoka Prefecture, and borders Oita Prefecture. The Mino Mountain Range that spreads as a folding screen from the southern part of the city and extends to the east and west, and the Chikugo River that flows majestically in the northern part of the city are just some of many of the natural elements this city is blessed with. A fruit farm spans along the foot of the Mountain where you can pick all kinds of fruit nearly all year round. There are many other noteworthy places to see and visit throughout the city such as the flat path that was a staging post along Bungo Highway during the Edo Period, the row of white-walled houses built by wealthy merchants who made their fortune creating a moving scenery that endures even today, and various café and shops.



By car

- About 40 min. from the Dazaifu IC to the Oita Expressway. Roughly 45 min. from the Haki IC. About 10 min. from each IC.
- About 50 km from the Fukuoka National Highway 386.
- About 25 km from the Kurume National Highway 210.



By train



By bus

- Take the JR Kagoshima Main Line and change at Kurume Station. Take the Kyudai Main Line and get off at Chikugo-Yoshii Station, Ukiha Station or Chikugo-Oishi Station.
- Take the Nishitetsu bus from Nishitetsu-Kurume and get off at the Yoshii Office or at the Ukiha Station.

Access

UKIHA Tourist Guidebook

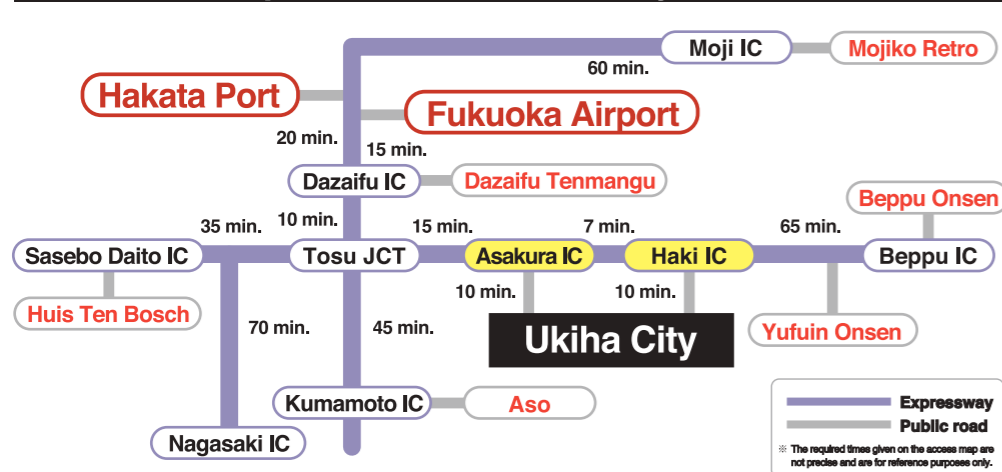
Enjoy the Original Japanese Landscape and Delicious Fruits

Only
1
hour
from
Fukuoka

Only 1 hour
from Hakata Port/
Fukuoka Airport



Expected Travel Times by Car

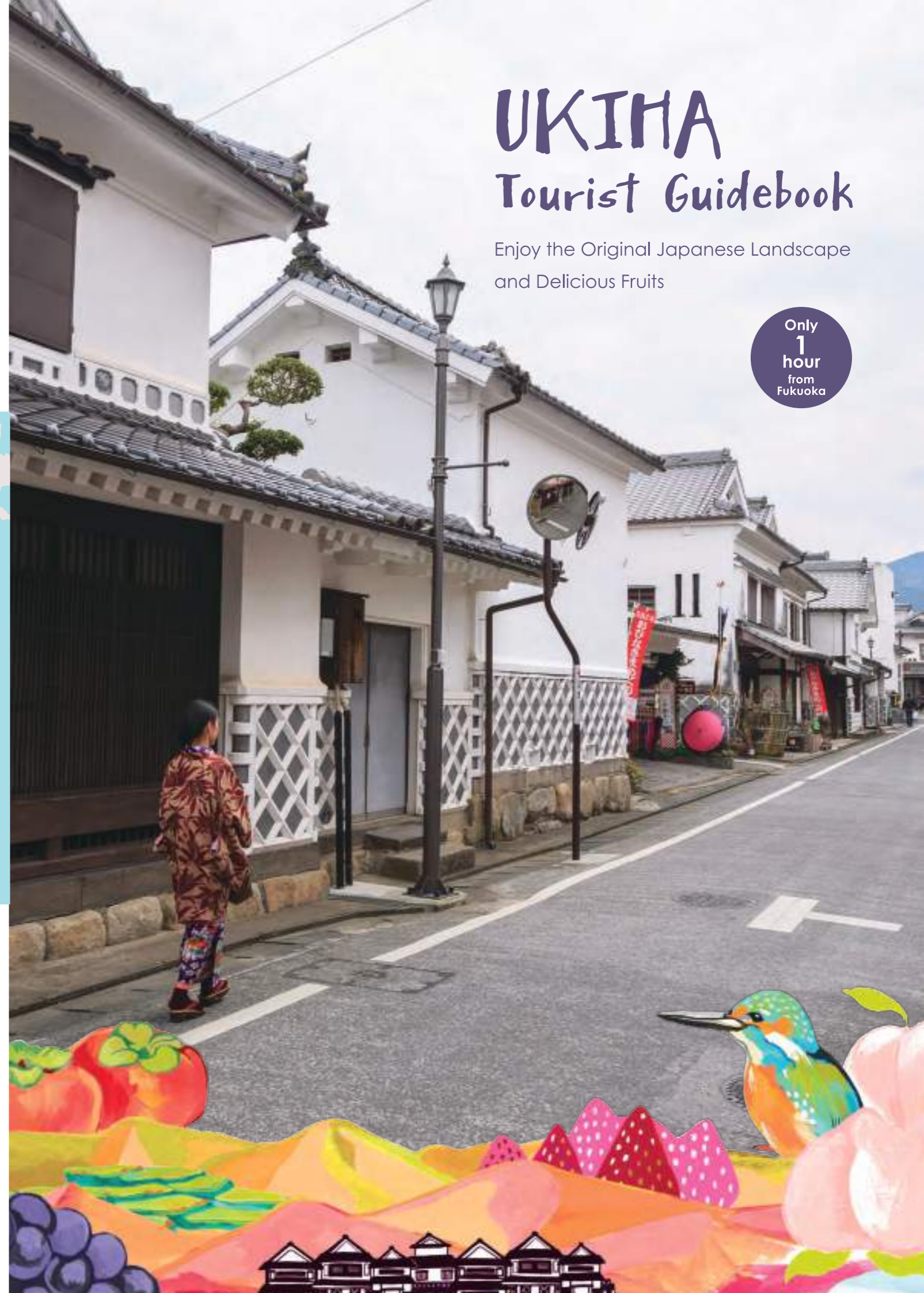


Estimated time to travel to the main tourist attractions

- Haki IC to the Ukiha roadside service area [About 10 min.]
- Asakura IC to the White-walled street [About 10 min.]

Access to Kyushu's other tourist attractions and hot springs from Ukiha

- About 20 min. to Hita Hot Springs
- About 40 min. to Amagase Hot Springs
- About 65 min. to Tsuetate Hot Springs
- About 80 min. to Kurokawa Hot Springs
- About 105 min. to Aso
- About 65 min. to Yufuin





Tsuzura Rice Terrace was selected as Japan's Top 100 Rice Terraces



The historical "Igura no Yakata" in Ukiha



The appeal of fruit picking is to taste seasonal delights.

Experience the Original Japanese Landscape and Enjoy the Fruit Kingdom

Ukiha is about an hour from Fukuoka via both train and car. With the beautiful rice paddies extending between the mountains of the Mino Mountain Range, the bright greenery of the forests, the mountain villages and so on, you can surely witness the so-called "Original Japanese Landscape" here in Ukiha. The 400-year old terraced rice paddy provides a beautiful landscape each season, such as the red spider lilies in autumn. You'll be healed by the nature-rich forests, mountain villages, and clear streams. Ukiha is also known as the kingdom of fruits where you can enjoy a variety of fruits throughout the year, including strawberries, peaches, grapes, pears, persimmons, and more. Strolling around the town to feel the past and present of Ukiha is also one of the more popular attractions. The Chikugo-Yoshii area flourished as a staging post during the Edo Period (1603-1860), during which many white-walled houses were built and remain to this day. The historical buildings such as the Kagamida Yashiki (Kagamida Mansion) and the Igura no Yakata (Igura-style Residence) are both dignified constructions. The shelves and transoms are some of the creative features that you can appreciate. Many establishments, such as variety stores, cafés, sweets shops, and bakeries open shop inside of these traditional Japanese houses. Ukiha's onsen ryokan inns are also highly recommended.



The Tsuzura Rice Terrace offers a magnificent view of the autumn red spider lilies. This scenery, including the stone walls, has been preserved for over 400 years.



From mid-February to early April the city bustles with the Ohina-sama Meguri, in which all houses display their Hina dolls.



Chouon Falls Park was selected as Japan's Top 100 Water Source Forests. The fresh green leaves in spring and foliage in autumn are outstanding. Come summer, the cool environment will make you feel as you're in a different world! The negative ions emitted in the air have a relaxing effect.



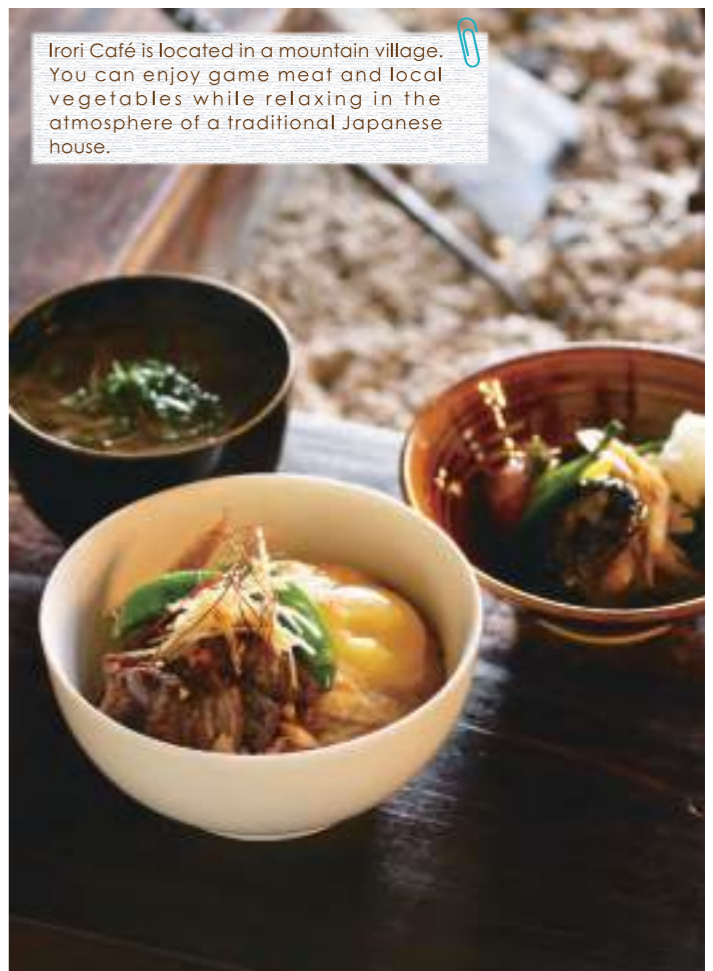
Enjoy seasonal fruits throughout the year.



Explore the white-walled townscape on a rickshaw! (offered for a limited time only)



Ukiha Inari Shrine offers a panoramic view of the city.



Irori Café is located in a mountain village. You can enjoy game meat and local vegetables while relaxing in the atmosphere of a traditional Japanese house.



The outdoor baths at Ukiha-Chikugogawa Hot Springs and Yoshii Hot Springs are referred to as "hot springs of beauty".

Recommended Course to Explore Ukiha on Foot

While it is convenient to travel around Ukiha by car, it is recommended to take a leisurely walk through the city center to enjoy the traditional white-walled row of houses. This section introduces a recommended course for a memorable day!

1 JR Chikugo-Yoshii Station

Walk for 13 Min

The tourist information center is here!

2 Kanko Kaikan Kura (Ukiha's Tourist Center)

You can pick up a map and a brochure, and also learn about the places around Ukiha where you can go fruit picking. You can also rent a bicycle for the day (¥500)!

1043-2 Yoshii-machi Ukiha City
Open 9:00~17:00
Closed: Mondays, year-end and new-years
(If a Monday falls on a national holiday, will open)



3 Lunch and coffee in Shirakabe Street (the white-walled houses area) and tour of the merchandise shops

3-A Igura no Yakata (Igura-style Residence)

1103-1
Yoshii-machi
Ukiha City



3-B Kagamida Yashiki (Kagamida Mansion)

113-1
Wakamiya
Yoshii-machi
Ukiha City



Fruit picking

Contact Ukiha's Tourist Center
Kanko Kaikan "Kura"



Recover at the rice terraces and through forest therapy

If you go by taxi, make sure to arrange a return time to ensure you can get back.



35 min. by car (taxi)

Visit Famous Sites

The torii's shrine gate and the view from Ukiha Inari Shrine are magnificent!



Direct sales stand

You can buy local specialties at "Roadside Station Ukiha" and "Niji-no-mino-no-Sato".



Don't miss out on these specialties!

There are a lot of specialties made with the abundant local ingredients, such as fruit desserts and wheat noodles. Eat as many items that catches your eyes!



Fresh horse meat from their private ranch topping a bowl of rice!

Ba-an konomi
Sakura-don



Chinese Soba noodles in dashi-based chicken broth.

Osami Chuka Soba
Chinese Soba



A freshly-made tart made from Ukiha's delicious seasonal fruits.

cake.cafe.miel
Ukiha Tart

Ukiha's Fruit Picking & Event Calendar

You can enjoy fruit picking throughout the year in Ukiha as well as beautiful flowers and traditional festivals.



Mid-April to early May Azalea and Rhododendron Garden

In the beautiful "Yamaniwa Sandai" mountain garden located in the Kojio District, you can see 3000 azaleas and 100-year-old rhododendrons in full bloom.



May Tour of Chikugo-Yoshii's Small Art Gallery

Displayed here are some precious collections that have been gathered in Yoshii since ancient times, as well as the forerunners' posthumous works, and some works of art made by the city's contemporary artists.

June Kojio Firefly Festival

At Kojio River, you can see the wild dance of the fireflies flocking together. The main hall bustles with the stalls of the local people.



July Ukiha-Chikugogawa's Onsen Firework Festival

The fireworks vividly color the summer night sky. Since the festival is not overly crowded, you can leisurely watch the fireworks at the levee.

July Chouon Falls Ryusui Pool Opening

Enjoy the natural running water pools at the park that can be described as nature's air conditioner.

July Yoshii Gion Festival

Beautiful and huge Yamasaka floats, musical accompaniment and night stalls are just some of the things this bustling seasonal festival has to offer.

September Ukiha's Rice Terraces Red Spider Lilies Tours & the Basara Festival

Take the opportunity to enjoy the magnificent views of Ukiha's rice terraces colored with red spider lilies and the golden ears of rice. Several events will be held during the festival, such as the scarecrow contest.

October Wakamiya Okunchi

Wakamiya Hachimangu's Autumn Festival. The procession of children wearing kimonos and the traditional Keyari performance are spectacular sights to see. A wide variety of performances are held throughout the night.

November Wax Tree Illumination

Catch the must-see autumn leavings turning crimson during the evening. Many people crowd along the upper-side of the Enjuji River, where roughly 150 wax trees have been planted over 800 meters.

Mid-February to early April Hina Doll Displays in Chikugo-Yoshii

With the characteristic white-walled row of houses in the background, a lot of luxurious and rare Hina Dolls owned by the old families and the residents of Yoshii Town in Ukiha are displayed in every house, shop, ancient house and public facility.

Late March to early April Cherry Blossoms Season

The rows of cherry trees in Nagare-kawa is breathtaking. There are many must-see places through out the city, including the Goshō Dam Park, the Yoshii Hyakunen Park, and Wakamiya Hachimangu.



References

Ukiha Tourism and Future Creation Public Corporation

1043-2 Yoshii-machi Ukiha-city, Fukuoka Prefecture
Opening Time : 9:00~17:00 Closed : Mondays, year-end and new-years
TEL : 0943-76-3980 Email : info@ukihalove.jp



UKIHA city MAP

Asakura IC
朝倉IC

Oita
大分

Haki IC
杷木IC

To Amagi
至 甘木

To Fukuoka
至福岡

To Oita
至大分

To Toho Village
至 東峰村

To Kurume City
至 久留米市

To Hita City
至 日田市

To Hoshino Village in Yame City
至 八女市星野村